

Carmenta Engine 5.13 Extensions

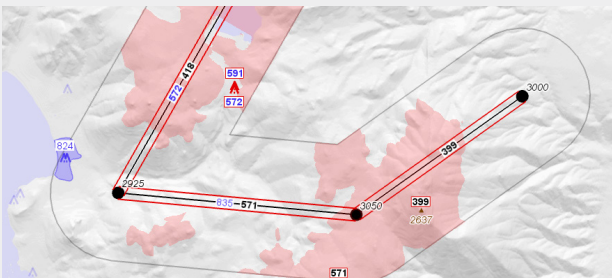
3D EXTENSION

- Enables interactive 3D fly-throughs with dynamic loading of data.
- On the fly generation of 3D worlds straight from 2D/3D GIS data in any format supported by the Engine – no 3D modeling is needed.
- For more information, refer to the separate Carmenta Engine 3D Extension product sheet.



EXTENSIONS FOR TERRAIN ANALYSIS

- Vertical Profile Extension: Generates a vertical profile along routes, cutting through both terrain and vector data sources such as airspaces.
- Vertical Clearance Extension: Calculates the terrain and obstacle clearance in a corridor around routes.
- Terrain Warning Extension: Dynamic terrain colouring in 2D and 3D to indicate the distance to the aircraft.
- For more information, refer to the separate product sheet Carmenta Engine Extensions for Terrain Analysis.



CATALOG EXTENSION

- Gives Carmenta Engine based applications a structured way to handle background maps. A Catalog can be instantiated either from a local folder or from an OGC CSW service.
- The Carmenta Map Builder application (sold separately) gives end users an easy way to add new maps to the catalog.

GEOREFERENCED VIDEO EXTENSION

- Makes it possible to georeference full motion video streams on the fly in order to display the video overlaid on the map.
- For more information, refer to the separate Carmenta Engine Georeferenced Video Extension product sheet.



TACTICAL EXTENSION

- Extension for creating, managing and visualising tactical symbols according to the DOD MIL-STD-2525 and NATO App-6 standards.
- For more information please refer to the separate Carmenta Engine Tactical Extension product sheet.

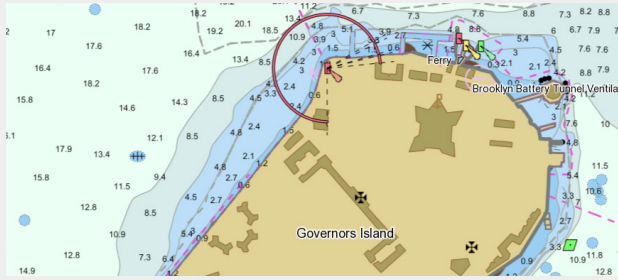


¹ Not available on Carmenta Engine Linux.

² Not available on Carmenta Engine for Android.

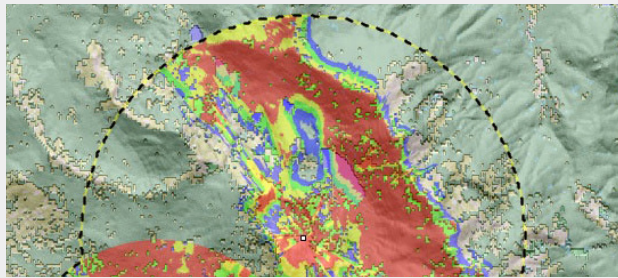
NAUTICAL CHART EXTENSION

- Extension for using Nautical Charts according to the IHO S-57, S-63 and S-52 standards.
- Reads and portrays both ENC and NATO AML data.



VISIBILITY ANALYSIS EXTENSION

- Extension for performing high performance visibility calculations in both 2D maps and 3D city environments.
- Extremely rapid – designed to be computed on-the-fly for moving objects.
- Also provides high-performance calculation of intravisibility between multiple moving objects, useful for target tracking.

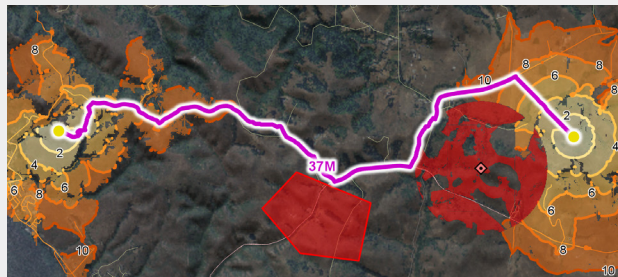


MILITARY GEODATA FORMATS EXTENSION

- Adds functionality for reading military geographic data in CMRG (PCMap), DFAD and RPF (CADRG and CIB) formats.

TERRAIN VEHICLE ANALYSIS EXTENSION

- Makes it possible to calculate optimal off-road routes for terrain vehicles based on ground conditions and vehicle characteristics.
- Can also calculate terrain vehicle accessibility and deployability.



MAP PACKAGE EXTENSION

- Makes it possible to package a mix of map images, raster data and vector data in a single, optimised package.
- Especially useful for mobile devices where it is essential to minimise the amount of processing necessary to read and display data.
- Supports the OGC GeoPackage standard to ensure interoperability with other systems.

ARINC 424 EXTENSION

- Reads aeronautical navigation database files on the ARINC SPECIFICATION 424-16, 424-17 and 424-18 formats.



HEATMAP EXTENSION

- Adds functionality for dynamically generating point density rasters which can be visualised as heatmaps.

C-MAP CM93 EXTENSIONS ^{1, 2}

- Adds support for reading C-MAP CM93 nautical charts and visualising them according to the IHO S-52 standard.

DWG AND DXF EXTENSION ²

- Extension for reading CAD databases in DWG and DXF, the AutoCad file formats.

SPATIAL DATABASE EXTENSIONS ²

- Extensions for reading geospatial data from different kinds of database systems:
- Microsoft SQL Server Extension
- MySQL Extension
- Oracle Spatial Extension
- PostgreSQL/PostGIS Extension

PLOT EXTENSION

- Extension for efficient rendering of radar plots and other extremely dynamic information.
- Easily handles millions of continuously updating plots.
- For more information refer to the separate Carmenta Engine Radar Extensions product sheet.

RADAR VIDEO EXTENSION

- Extension for hardware accelerated rendering of Radar Intensity Displays.
- For more information refer to the separate Carmenta Engine Radar Extensions product sheet.



For further information, please contact us:
+46 31 775 57 00, info@carmenta.com
carmenta.com